



Quay Healthcare ADHD newsletter APRIL 2024

Contact Details:

01925 387 058
cmicb-war.adhdservice@nhs.net
Orford Jubilee Hub

ADHD fact of the month!
People with ADHD are more
creative because of their
natural curiosity and
playfulness!

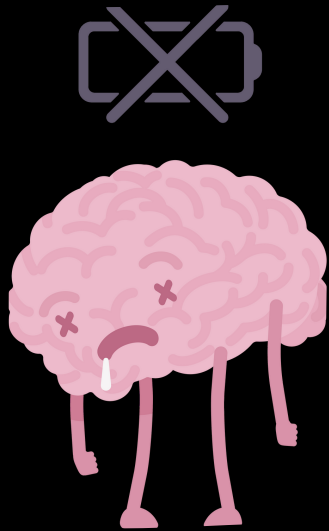
ADHD Newsletter

APRIL 2024

EXPEDITE CRITERIA

As the Warrington Adult ADHD Service is a routine service, priority for assessment will be based on the duration of time since referral. If prioritisation is requested by a healthcare professional, admin will pass the details to the weekly clinical MDT meeting where their case will be discussed with all members of the team. However, if requested by the patient themselves, admin will send a letter advising that we are a routine service and signposting them to other support services.

We can only prioritise/expedite in the most exceptional cases to avoid further delays for all other patients.



ADHD GUIDELINES

The most recent version of the ADHD Guidelines have been published. It's good to see that our service has already adhered and followed many of the guidelines.

In accordance with NICE guidelines, clinical team members assess, diagnose, treat and manage adult ADHD.

They also follow the BNF prescribing recommendations when titrating the dose of a patient's ADHD medication.

AUTISM SCREENING

Our service does not provide autism assessments for patients without ADHD symptoms. Patients wishing to solely explore an autism diagnosis must be referred to the Mersey Care Autism Service.

However, the service offers screening appointments to those who have been referred internally by the specialist within the team, and sits alongside a patient's ADHD referral.

The Assistant Psychologist, who offers the screening appointments, works alongside the team within Mersey Care to ensure that their screening is robust, accurate and appropriate.

REFERRAL UPDATE

We have recently been informed that our referral pathway has changed. These are now to be published via Gateway. For upcoming referrals, please ensure patient's are referred via this pathway.